



*Therefore, since we are surrounded by such a great cloud of witnesses, let us throw off everything that hinders and the sin that so easily entangles. And let us run with perseverance the race marked out for us, fixing our eyes on Jesus, the pioneer and perfecter of faith. Hebrews 12: 1&2*

## **Sunday 29<sup>th</sup> November 2015 - First Sunday of Advent**

10:00 – 10:15 am Prayer (upstairs)

10:30am Worship Service

11:00am Sunday Clubs

Sermon: Romans 12:1-8 A Life Worth Living

*If you miss a sermon they are available on our website.*

6:30pm United Service at St Michaels.

It will be a special Advent service called 'Approaching Light'. We are all bringing our Advent Wreaths and will light them together.



*Prayer is available after the service from our Prayer Ministry Team*

For those who use a hearing aid, a hearing loop is provided in the main hall. To use: switch to the 'T' position.





**Please remember our diary for the next week  
in your daily prayers**

**Monday 30<sup>th</sup> November**

6:30 pm Rock Solid

7:30 pm Prayer meeting at Peter Heckford's home Long  
Barton

**Tuesday 1<sup>st</sup> December**

10:00am KILTS Parent & Toddler Group

10:30am Bible study at Peter Heckford's home Long Barton

**Friday 4<sup>th</sup> December**

9:30 am "Craft on Friday" in the Mary Hall Suite

**Sunday 6<sup>th</sup> December**

10:30am Communion Worship Service

7:30pm Caring for people with Dementia see back page for  
more information

\*\*\*\*\*

Communion help

As Bryan and Margaret have difficulty with travel in the immediate future, we need some people who are willing to help put out and wash up the communion cups. If you can help, please tell David, Brian or Margaret.

## Make a note in your diary



- Sunday 6<sup>th</sup> December - Caring for People With Dementia - You Can Make a Difference – Free event – More information on the back page
- The December Coombeswood service is on 13<sup>th</sup> December



A few dates to remember for Christmas - all in the Community Hall unless stated

- ★ *Monday 7<sup>th</sup> 7:00 pm Mayor's Carol Service*
- ★ *Friday 11<sup>th</sup> 7:00 pm Town Carols outdoors at the Fountain, Kingsteignton. Good one to show support*
- ★ *Saturday 12<sup>th</sup> 10:15am Pennywell Farm Nativity Cost £7 per person. Please contact Tricia if you would like to join us.*
- ★ *Sunday 13<sup>th</sup> 10:30am KCBC Nativity*
- ★ *Sunday 20<sup>th</sup> 10:30am All-Age Carols*  
*6:30pm Carols by Candlelight*
- ★ *Wednesday 25<sup>th</sup> 10:00 am Christmas Service*



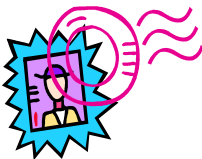
Once again we are going to the Pennywell Nativity on Saturday 12<sup>th</sup> December at 10.15am and is £7 per person. Please contact Tricia to book your place. A great one to invite friends and neighbours.



A very big THANK YOU on behalf of the 30 children in Belarus who will receive shoeboxes from KCBC and the many others who had items added into their boxes at the warehouse. *Tricia*

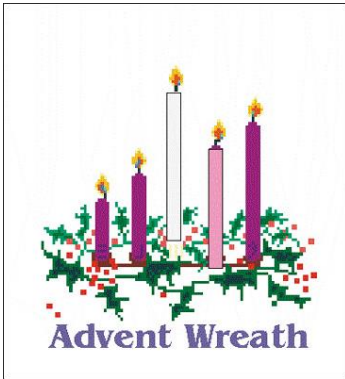
### **A prayer for our shoeboxes.**

- ✿ *Everyone needs to learn. We pray that our gifts will help children to enjoy learning at school.*
- ✿ *Everyone needs clothes. We pray that our gifts will help children to keep warm, day and night.*
- ✿ *Everyone needs to keep clean. We pray that our gifts will help children to enjoy looking after themselves.*
- ✿ *Everyone needs to be loved. We pray that our gifts will help children to know that someone cares for them.*



**HOME MISSION STAMPS .....and much more**  
**Please save all your stamps from Christmas cards and encourage family and friends to do**

Stamps should have a 6mm or ¼ inch border. For more information please talk to Rita



Today is the first Sunday in Advent (Advent Sunday).

When Traditionally Christians all over the world light the first candle of the Advent Wreath. But what does it all mean?

**The Wreath:** The wreath itself means "victory" as Christ's victory over sin so He can save us. The Advent Wreath has 4 or 5 candles that are arranged in a circle symbolizing Christ's eternity, as a circle has no beginning and has no end, it is a symbol for God, Who is eternal and thus without beginning or end. The evergreens mean He is "ever with us," they are usually pine branches or holly that are used as a base that represents anticipation, newness, renewal and His everlastingness. The red berries of the holly represent the shedding of Christ's blood.

The first candle "CANDLE OF HOPE" means His promise and hope. We can have hope because God is faithful and will keep the promises He made to us. Our hope comes from God. (Romans 15:12-13)

*And again, Isaiah says,*

*"The Root of Jesse will spring up,*

*one who will arise to rule over the nations;*

*in him the Gentiles will hope."*



*<sup>13</sup> May the God of hope fill you with all joy and peace as you trust in him, so that you may overflow with hope by the power of the Holy Spirit.*

## **Caring for People With Dementia - You Can Make a Difference**

Dementia is often talked about but little understood. It can be distressing when people we care about develop dementia or receive a diagnosis of Alzheimer's but how can we care for them? In this evening event we will be guided by Dr Arnold Cade, a psychiatrist of many years' experience and a member of one of our local churches. Arnold will help us explore what dementia is (and isn't), how it can affect people and how we can make a positive difference to people for whom dementia is an issue. We will have opportunity to bring any personal experiences or concerns to the session and think through together how we can help.

This FREE event is open to people outside KCBC. Do consider who you might invite. Venue: Community Hall.

Date: Sunday 6<sup>th</sup> December Time: 7:30 p.m. - 9:00 p.m.

*“Therefore encourage one another and build each other up, just as in fact you are doing” 1 Thes 5:11*

It is great to hear how God has been encouraging his people. Throughout Scripture we see instructions to encourage one another and verses that are meant to encourage us. It would be great if YOU could forward bible verses, poems, passages, songs etc. that have been of encouragement, I can then include them in the newsletter and we can all

encourage each other...thank you *Sarah*

